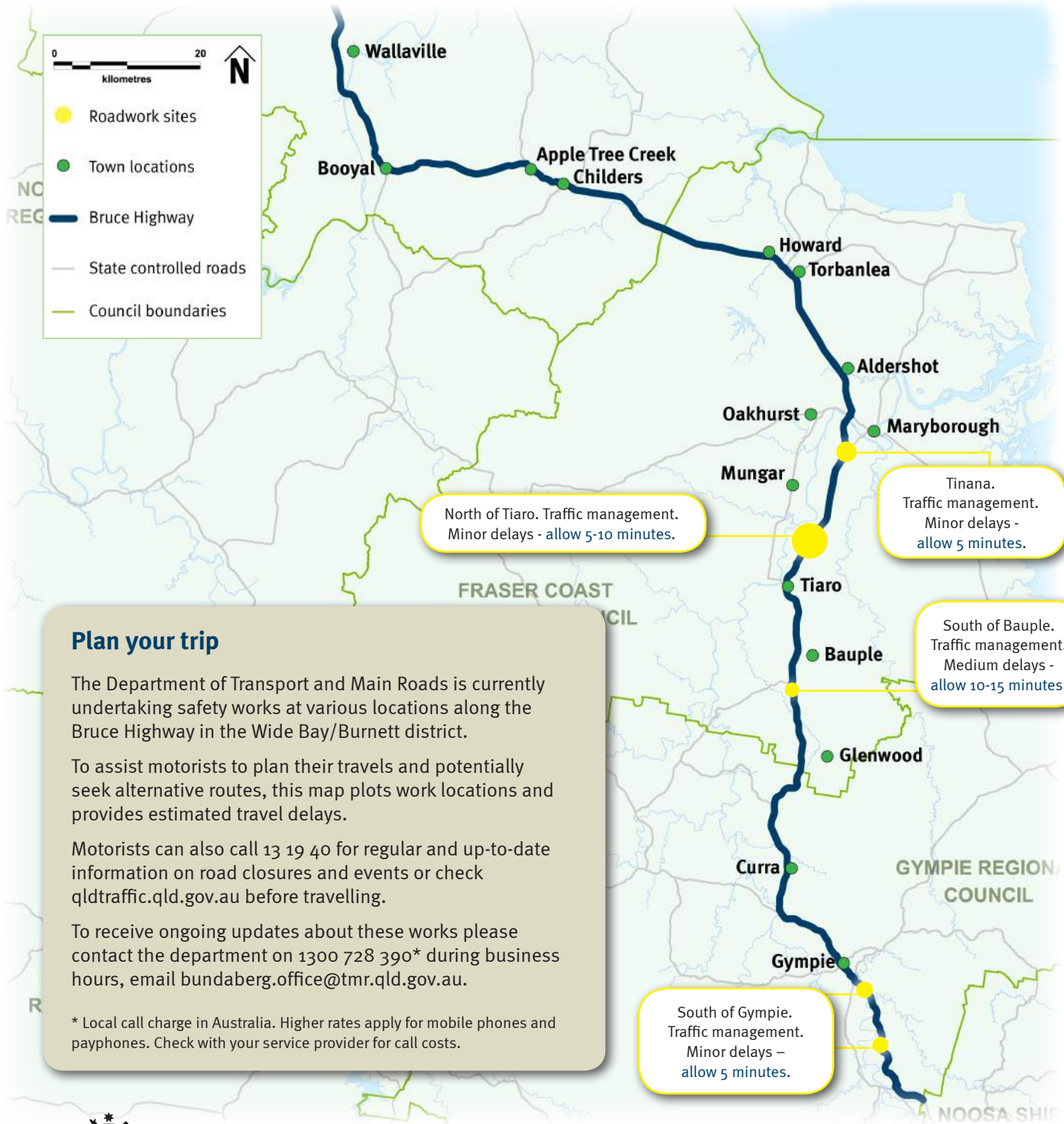


Bruce Highway Safety Works

Wide Bay/Burnett district – June 2017



Plan your trip

The Department of Transport and Main Roads is currently undertaking safety works at various locations along the Bruce Highway in the Wide Bay/Burnett district.

To assist motorists to plan their travels and potentially seek alternative routes, this map plots work locations and provides estimated travel delays.

Motorists can also call 13 19 40 for regular and up-to-date information on road closures and events or check qldtraffic.qld.gov.au before travelling.

To receive ongoing updates about these works please contact the department on 1300 728 390* during business hours, email bundaberg.office@tmr.qld.gov.au.

* Local call charge in Australia. Higher rates apply for mobile phones and payphones. Check with your service provider for call costs.



Australian Government

BUILDING OUR FUTURE



Queensland Government